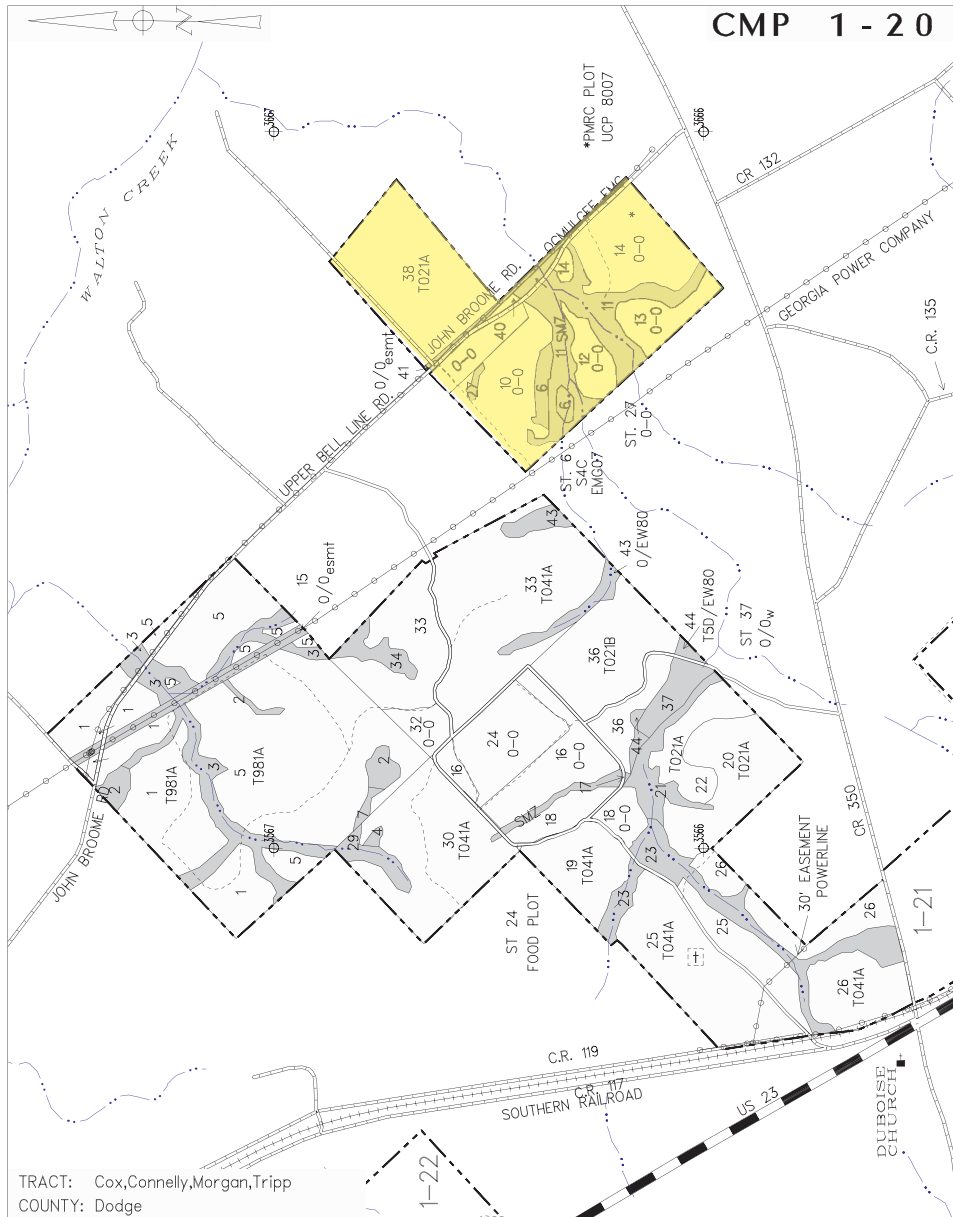


TRACTS 21-23C

Dodge County, GA

CMP 1-20



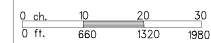
TRACT: Cox, Connelly, Morgan, Tripp
COUNTY: Dodge

ST	PINE	HW	S/DLT	ACRES	L	S	SI	HT	SPA	FT	HB	T	LC	UP	ST	PINE	HW	S/DLT	ACRES	L	S	SI	HT	SPA	FT	HB	T	LC	UP
1	T	981A	7508	55.72	8	63	12.8	700																					
2	S	5D	HR	6.51	0	0	0	0	0	0																			
3	S	5D	NWE9510A	26.41	0	0	0	0	0	0																			
4	S	4D	0	0.61	0	0	0	0	0	0																			
5	T	981A	7508	109.22	8	62	12.0	703																					
6	S	4C	EMG0710A	4.61	0	0	0	0	0	0																			
7	S	4C	ME 68728	1.01	0	0	0	0	0	0																			
10	0	0	0	21.92	0	67	0	0	0	0																			
11	0	0	EMG8524C	27.51	0	0	0	0	0	0																			
12	0	0	0	7.62	0	67	0	0	0	0																			
13	0	0	0	9.72	0	67	0	0	0	0																			
14	0	0	0	26.12	0	67	0	0	0	0																			
15	0	0	0	7.80	0	0	0	0	0	0																			
16	0	0	0	22.22	0	68	0	0	0	0																			
17	0	0	ME 7910A	3.41	0	0	0	0	0	0																			
18	0	0	0	13.12	0	69	0	0	0	0																			
19	T	041A	6004	18.52	8	65	0.0	510																					
20	T	021A	6011	28.52	8	61	0.0	500																					
21	S	5D	EM 7922C	8.91	0	0	0	0	0	0																			
22	T	021A	7518	13.02	8	57	0.0	500																					
23	0	0	MERB222C	23.41	0	0	0	0	0	0																			
24	0	0	0	21.12	0	73	0	0	0	0																			
25	T	041A	6004	53.72	8	65	0.0	510																					
26	T	041A	6004	33.32	8	65	0.0	510																					
27	0	0	HR 0710A	0.81	0	0	0	0	0	0																			
29	0	0	MERB022C	4.51	0	0	0	0	0	0																			
30	T	041A	6004	43.52	8	67	0.0	510																					
32	0	0	0	5.82	0	0	0	0	0	0																			
33	T	041A	6004	85.52	8	67	0.0	510																					
34	0	0	GM 7732C	4.91	0	0	0	0	0	0																			
36	T	021B	7518	40.02	8	63	0.0	386																					
37	0	0	0	6.82	0	0	0	0	0	0																			
38	T	021A	6011	42.82	8	67	0.0	500																					

OCMULGEE

CMP 1-20

DATE: 28 Feb 08



Entity = RFRR
Landline Miles = 5.5
Rayonier Acres
794
Stand Acres
802.2

Rayonier
Southeast Forest Resources